

# 3Dscan Handheld Laser 3D Scanners



3Dscan handheld laser 3D scanners include 3 models: 3Dscan SX, 7X, 3X, all got the accuracy authentication issued by National Academy of Metrology, which can greatly satisfy the application requirements for designers and QC department. High efficient reliable data collection method is adopted for a variety of areas including Inspection, Reverse Engineering and 3D printing etc.

Industrial measurement accuracy up to: 0.02mm  
Resolution: 0.05mm , Third-party traceable certification

## Applications :

Easy handling  
Inexperience user can learn to use well within 15 min



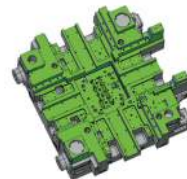
Handheld scanning :  
No any outer measurement arm or aid is needed.

Triangle self-positioning technology, parts can move freely, high accuracy can be assured without fixed installation



Automobile Industry

- Competitive product analysis
- Automobile modification
- Decoration customisation
- Modeling and design
- Quality control and parts inspection
- Simulation and finite element analysis



Tooling Casting

- Virtual assembly
- Reverse engineering
- Quality control and inspection
- Wear analysis and repair
- Jigs and fixtures design and adjustment



Aeronautics

- Rapid prototyping
- MRO and damage analysis
- Aerodynamics & stress analysis
- Inspection & adjustment of parts installation



3D Printing

- Molding Inspection
- Reverse design of molding to create CAD data
- End products comparison analysis
- Scanned data can be used for 3D printing directly

Other Areas

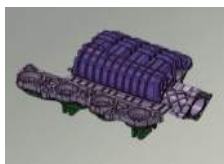
- Education and scientific research
- Medical and health
- Reverse design
- Industrial design



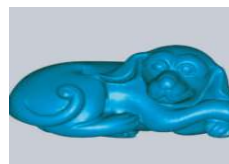
Reverse modeling of car steering wheel



Motors



Turbine reverse modeling



Toys scanning



Vase scanning and modeling



Museum digital engineering

## Model and parameters



Model	3Dscan SX	3Dscan 7X	3Dscan 3X
Weight	0.83 kg		
Size	310 × 147 × 80 mm		
Measurement Efficiency	480,000 times /s	205,000 times /s	
Scanning Range	275 × 250 mm		
Light Source	7 laser crosses(+ extra 1 beam)	3 laser crosses(+ extra 1 beam)	
Laser Class	Class 2M (eye-safe)		
Resolution	up to 0.05 mm		
Accuracy	up to 0.02 mm	up to 0.03 mm	
Volume Accuracy	0.02 + 0.06 mm/m	0.03 + 0.06 mm/m	
Volume Accuracy (Combined with PhotoShot)	0.02 + 0.025 mm/m	0.03 + 0.025 mm/m	
Reference Distance	300 mm		
Focus Depth	250 mm		
Output Format	.asc, .stl, .obj, .ply, .txt, .xyz etc., customisable		
Transmission	USB 3.0		
Operation Temperature	-20 ~ 40 °C		
Operation Humidity	10 ~ 90%		
Compatible Software	3D Systems (Geomagic Solutions), InnovMetric Software (PolyWorks), Dassault Systemes (CATIA V5 and SolidWorks), PTC (Pro/ENGINEER), Siemens (NX and Solid Edge), Autodesk (Inventor, Alias, 3ds Max, Maya, Softimage).		

### Contact Us :

Shanghai Digital Manufacturing Co., Ltd  
 Add: Lane 11, No. 8666 Hunan Highway, Pudong District, Shanghai,  
 201314, China  
 Tel : +86 021 31180558  
 Email : digitalmanu\_3d@sina.com  
 Website : www.digitalmanu.net

